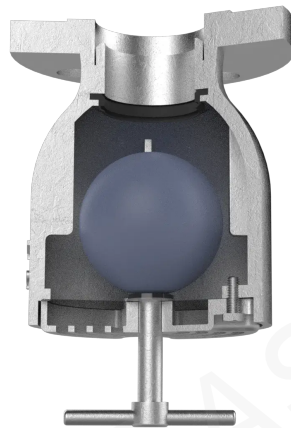


## 2-PM1-SS-F – Inverted Vent Check Valve PM1 Series 2 ?

SKU: 2-PM1-SS-F



### Description

- Prevents seawater from entering tanks Allows air/vapor to escape when tank is filling Allows air intake when tank is discharging Inverted (gooseneck) design offers simplest means for your requirements Design makes disassembly fast and easy

### Specification Table

_approximate_weight_lb	12
closing_device_option	None (Standard)
connection	Flanged
construction	Four (4) guide ribs to assure proper sealing Recessed cap; eliminates catch points Investment casting allows for higher accuracy and repeat ability during the casting process
dimension_c_in	5"
dimension_d_in	6.38"
dimension_e_in	6"
dimension_f_in	2"
dimension_g_in	0.5"
flame_insect_screen	Corrosion Resistant For Ignition Protection Easily Accessible For Maintenance

<b>float_option</b>	Stainless Steel (Standard) Full Round Seamless Polished Stainless Steel Float Assures A Positive Seal
<b>flow_rate_at_3_625_psi_gpm</b>	95"
<b>hardware</b>	Stainless Steel
<b>material</b>	316 Stainless Steel
<b>max_inlet_air_speed_mpers</b>	42"
<b>minimum_order</b>	1
<b>nitrile_seal</b>	Maximize Low Pressure Sealing Oil And Fuel Resistant
<b>package_type</b>	Each
<b>pipe_size_a_in</b>	2 In"
<b>standard_size_a_in</b>	2"
<b>units_per_package</b>	1
<b>valve_cap</b>	Eliminates need for a spacer ring and protective screen
<b>notes</b>	Air Intake Tested With Polyethylene Float (Lightest Float) And The Water Pumped Through The Vent Check Valves For The Flow Rate.