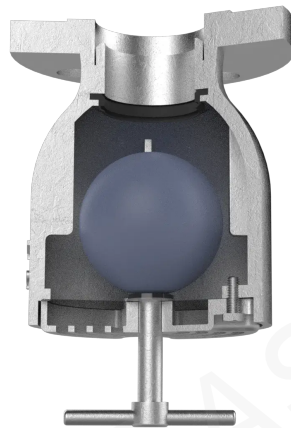


2-PM1-SS-S-C – Inverted Vent Check Valve PM1 Series 2?

SKU: 2-PM1-SS-S-C



Description

- Prevents seawater from entering tanks Allows air/vapor to escape when tank is filling Allows air intake when tank is discharging Inverted (gooseneck) design offers simplest means for your requirements Design makes disassembly fast and easy

Specification Table

_approximate_weight_lb	9
closing_device_option	Closing Device Innovative design is simple and cost effective
connection	Socket Weld
construction	Four (4) guide ribs to assure proper sealing Recessed cap; eliminates catch points Investment casting allows for higher accuracy and repeat ability during the casting process
dimension_c_in	5"
dimension_d_in	6.38"
dimension_e_in	6"
dimension_f_in	2"
dimension_g_in	0.5"
flame_insect_screen	Corrosion Resistant For Ignition Protection Easily Accessible For Maintenance

float_option	Stainless Steel (Standard) Full Round Seamless Polished Stainless Steel Float Assures A Positive Seal
flow_rate_at_3_625_psi_gpm	95"
hardware	Stainless Steel
material	Galvanized Steel
max_inlet_air_speed_mpers	42"
minimum_order	1
nitrile_seal	Maximize Low Pressure Sealing Oil And Fuel Resistant
package_type	Each
pipe_size_a_in	2 In"
standard_size_a_in	2"
units_per_package	1
valve_cap	Eliminates need for a spacer ring and protective screen
notes	Air Intake Tested With Polyethylene Float (Lightest Float) And The Water Pumped Through The Vent Check Valves For The Flow Rate.